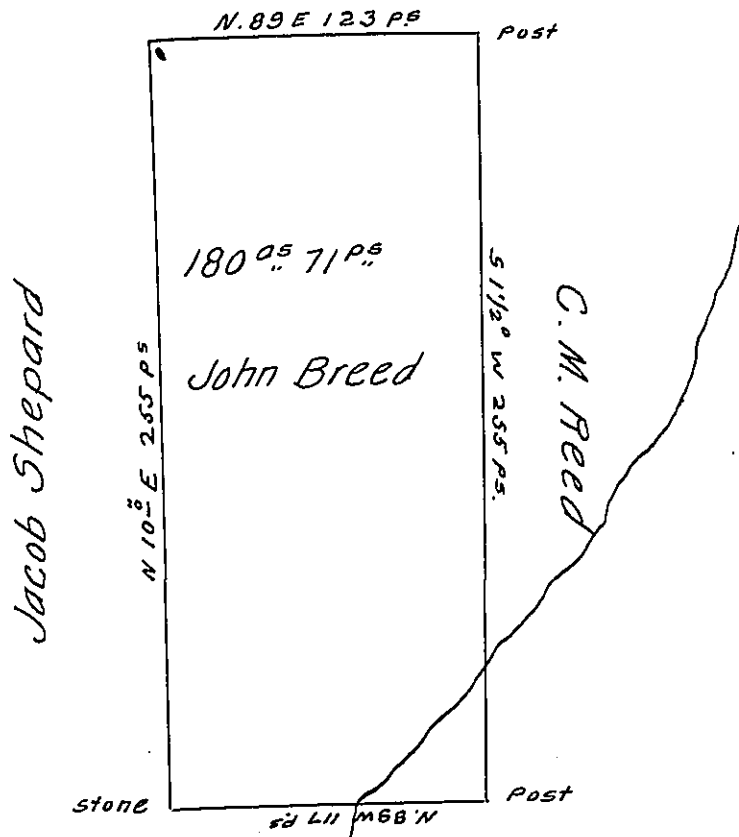


Robt Gray Mc Arthur Shepard

A draught of a tract of land in Union Township Erie County on the Waters of French Creek Surveyed to John Breed Nov. 10. 1851 by virtue of the actual settlement of Thomas Mc Elhany. Containing 180 acres & 71 perches of land and the allowance of Six per cent for roads &c. It being part of a larger tract Surveyed to Thomas Mc Elhany on the 17<sup>th</sup> day of Oct. 1804.



Palmer Shepard Tho<sup>s</sup> Mc Fadden

David Wilson, C.S.

Erie County ss.

I Certify that the above is a true copy taken from the Survey books of Said County. In witness where of I have hereunto set my hand and Waterford Bor. the 23<sup>rd</sup> day of February 1856.

To J. Porter Brawley Esq }  
Surveyor General

W<sup>m</sup> Benson  
Deputy Surveyor Erie Co

IN TESTIMONY that the above is a copy of the original remaining on file in the Department of Internal Affairs of Pennsylvania, made conformably to an Act of Assembly approved the 16th day of February, 1833, I have hereunto set my Hand and caused the Seal of said Department to be affixed at Harrisburg, this fourteenth day of October 1907.

Henry Howell  
Secretary of Internal Affairs.